



Virginia Healthcare Workforce Briefs

Indicators from the Bureau of Labor Statistics'
Current Employment Statistics Survey
Series 2: Regional & Sectoral Employment

Series 2, Issue 115

October 2021

Inside this Brief:

Regional Employment	2
Regional Employment Growth	3
Subsector Employment	3
Subsector Employment Growth	4
Region Map	5
About the Data	6

Highlights

- ◆ Data in this series are not seasonally adjusted and exhibit short-term volatility from fluctuations in holidays, weekends, weather and other seasonal factors. Estimates for the most recent month are preliminary.
- ◆ Northern Virginia's Health Care & Social Assistance (HC&SA) sector enjoyed its largest monthly employment in gain in more than one year. In September, this region created 2,900 new HC&SA jobs, a gain that translates into a 28.6% annualized employment growth rate. At the same time, the Rest of Virginia added 1,300 HC&SA jobs, while Hampton Roads increased HC&SA employment by 400. On the other hand, Richmond's HC&SA sector lost 200 jobs during the month.
- ◆ Ambulatory Health Care Services enjoyed an impressive month of employment growth in September with the creation of 3,700 new jobs, an increase that represents a one-month annualized growth rate of 25.9%. Social Assistance added 1,500 jobs in September, which translates into an even stronger 26.2% annualized growth rate. Meanwhile, Hospitals increased employment by 100 in September, but Nursing & Residential Care Facilities lost 900 jobs during the month.

Data in this report are not seasonally adjusted. Self-employed persons, including health professionals in private practice, are not included.

Data in Brief

Not Seasonally Adjusted*	Employment, in Thousands				Growth Rate, Annualized		
	Sept. 2020	June 2021	Aug. 2021	Sept. 2021	12 Month	3 Month	1 Month
Virginia							
Total Nonfarm	3,849.7	3,929.6	3,923.4	3,933.0	2.2%	0.3%	3.0%
Health Care & Social Assistance	436.4	445.3	442.7	447.1	2.5%	1.6%	12.6%
Hampton Roads							
Total Nonfarm	755.2	773.5	764.7	763.1	1.0%	-5.3%	-2.5%
Health Care & Social Assistance	91.3	90.3	88.3	88.7	-2.8%	-6.9%	5.6%
Northern Virginia							
Total Nonfarm	1,442.6	1,486.7	1,485.7	1,487.5	3.1%	0.2%	1.5%
Health Care & Social Assistance	131.6	135.0	136.7	139.6	6.1%	14.3%	28.6%
Richmond							
Total Nonfarm	648.2	651.4	652.4	648.8	0.1%	-1.6%	-6.4%
Health Care & Social Assistance	83.1	84.0	83.8	83.6	0.6%	-1.9%	-2.8%
Rest of Virginia							
Total Nonfarm	1,003.7	1,018.0	1,020.6	1,033.6	3.0%	6.3%	16.4%
Health Care & Social Assistance	130.4	136.0	133.9	135.2	3.7%	-2.3%	12.3%

Preliminary estimates are italicized

*Seasonally adjusted data are adjusted by the Bureau of Labor Statistics to account for weather and other seasonal changes. Since the U.S. Bureau of Labor Statistics does not provide seasonally adjusted data at this level, this series uses **non**-seasonally adjusted data exclusively. Seasonal variation may account for some of the variation in time series data. When comparing data in this series to other HWDC series or other publications it is important to note whether the data reported have been seasonally adjusted.

Regional HC&SA Employment Growth, Level

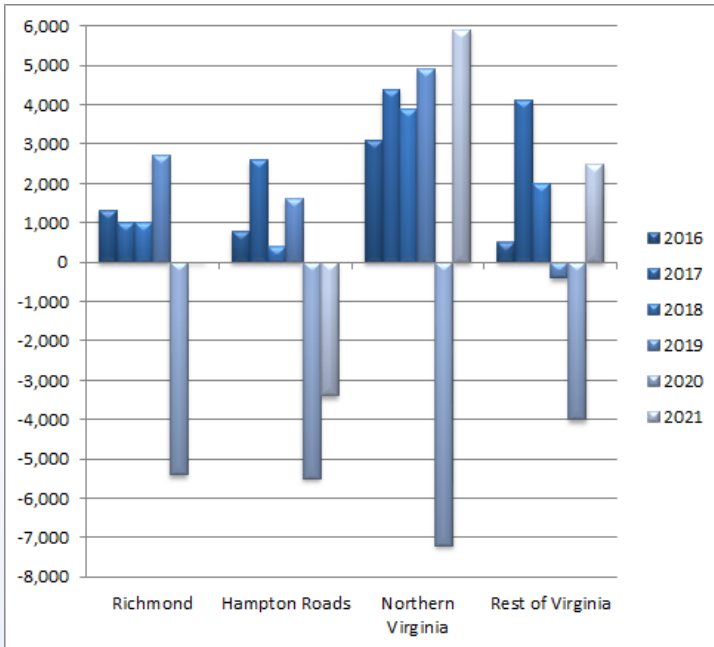


Figure 1: Annual & YTD Change in HC&SA Regional Employment (Not Seasonally Adjusted, Full-Year Change for 2016-2020, Year-to-Date Change for 2021).

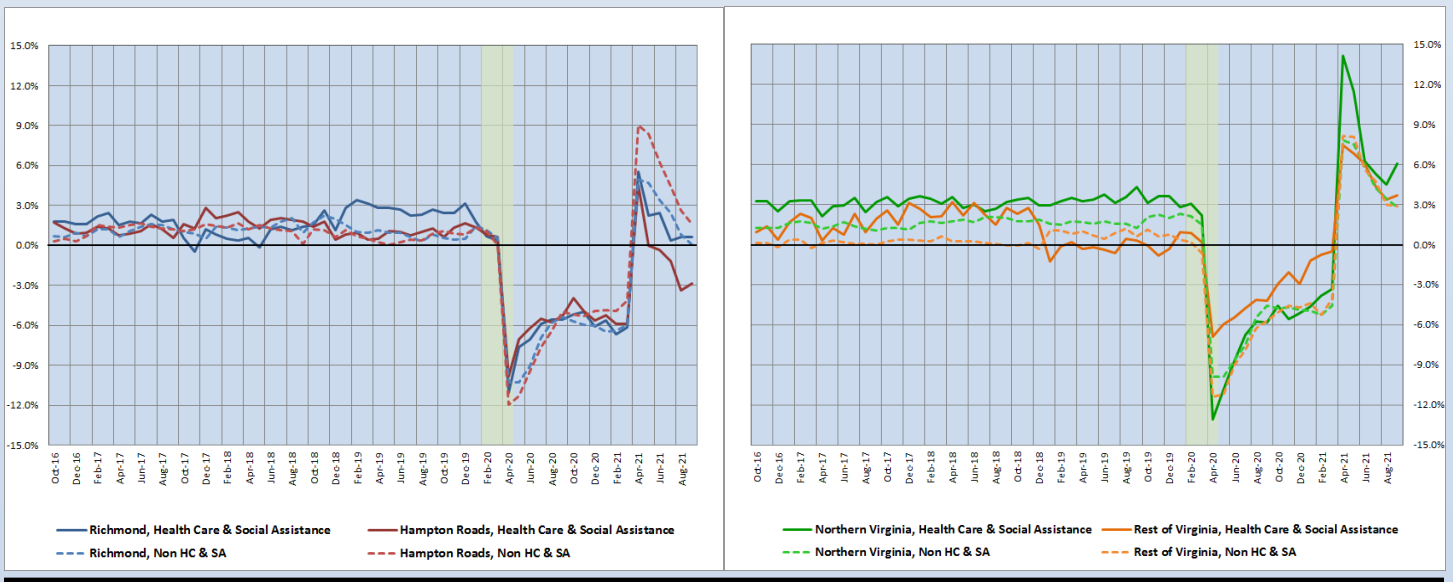
According to the preliminary data released on Friday, October 22, 2021, by the U.S. Department of Labor, Bureau of Labor Statistics, Northern Virginia’s Health Care & Social Assistance (HC&SA) sector created 2,900 new jobs in September. This gain represents a one-month annualized employment growth rate of 28.6%. With this gain, Northern Virginia has increased HC&SA employment in each of the past three months. During Q3 2021, Northern Virginia has created a total of 4,600 HC&SA jobs, which translates into a 14.3% annualized employment growth rate.

The Rest of Virginia also enjoyed strong HC&SA employment growth in September. This region created 1,300 new HC&SA jobs, a gain that represents a one-month annualized employment growth rate of 12.3%. Hampton Roads increased HC&SA employment as well during the month. In September, Hampton Roads created 400 new HC&SA jobs. This increase translates into a 5.6% annualized employment growth rate. On the other hand, Richmond’s HC&SA sector lost 200 jobs during the month.

Year-Over-Year Regional Employment Growth

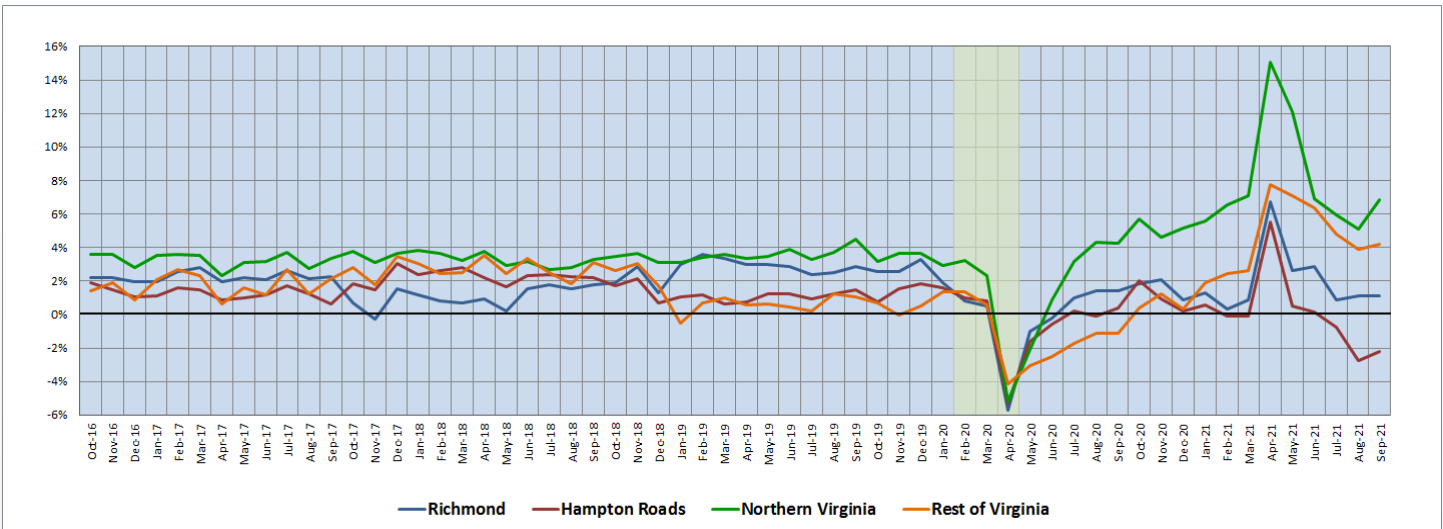
After falling for four consecutive months, Northern Virginia’s year-over-year HC&SA employment growth rate rebounded in September, increasing from 4.51% to 6.08% during the month. At this level, Northern Virginia continues to enjoy the fastest year-over-year HC&SA employment growth rate in the state. The Rest of Virginia also experienced an improvement to its year-over-year HC&SA employment growth rate, which increased from 3.40% to 3.68% in September. At the same time, Hampton Roads saw its own year-over-year HC&SA employment growth rate increase from -3.39% to -2.85%. Finally, the year-over-year HC&SA employment growth rate for Richmond held steady at -0.60% during the month.

Figure 2: Year-Over-Year Employment Growth (Not Seasonally Adjusted).



12-Month Average Employment Growth by Region

Figure 3: 12-Month Moving Average, HC&SA Regional Employment Growth Rate (Not Seasonally Adjusted).



In September, Northern Virginia saw its 12-month HC&SA employment growth rate moving average increase from 5.08% to 6.84%. This moving average has fallen considerably since reaching an unprecedented high of 15.06% back in April. Regardless, it still remains quite elevated in comparison to its historic levels. Prior to this year, Northern Virginia’s 12-month HC&SA employment growth rate moving average had not exceeded 6% in well over one decade. The Rest of Virginia’s 12-month HC&SA employment growth rate moving average increased from 3.87% to 4.17%, while Hampton Roads saw its comparable moving average rise from -2.78% to -2.21%. As for Richmond’s HC&SA sector, its 12-month employment growth rate moving average remained unchanged at 1.13% in September.

Subsector Employment Growth

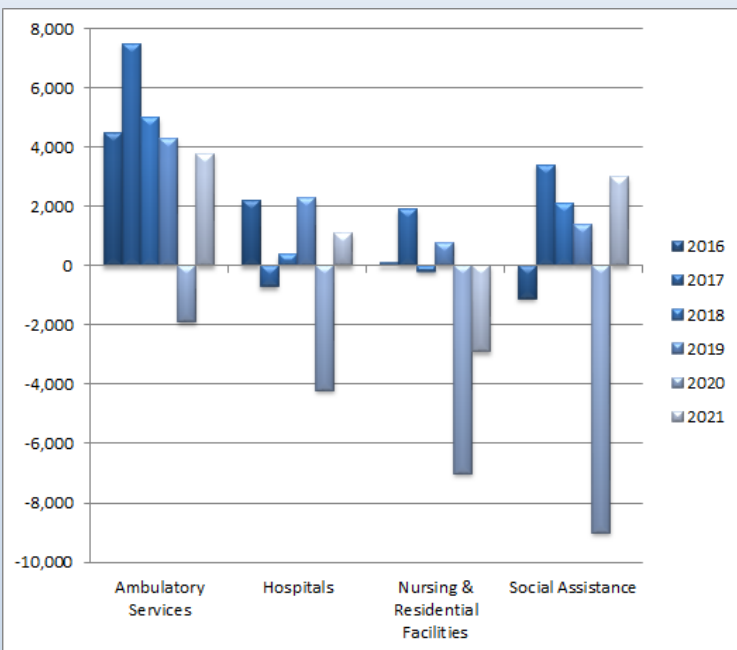


Figure 4: Annual & YTD Change in HC&SA Subsector Employment (Not Seasonally Adjusted, Full-Year Change for 2016-2020, Year-to-Date Change for 2021).

Nearly all of this month’s HC&SA job growth in Virginia occurred in Ambulatory Health Care Services and Social Assistance, both of which enjoyed sizable employment gains during the month. Ambulatory Health Care Services produced the largest employment gain in September. This HC&SA subsector created 3,700 new jobs during the month. This increase represents the largest employment gain in Ambulatory Health Care Services in nearly one year. This month’s increase is also responsible for nearly the entirety of this HC&SA subsector’s year-to-date employment gain. So far this year, Ambulatory Health Care Services has created 3,800 jobs.

Social Assistance added 1,500 new jobs in September. With this gain, Social Assistance has now increased employment in seven out of the past eight months. In total, Social Assistance has created 3,000 jobs so far in 2021. Hospitals also experienced positive employment growth in September with the addition of 100 new jobs. On the other hand, Nursing & Residential Care Facilities lost 900 jobs.

Distribution of Growth by Subsector

Not Seasonally Adjusted	Employment, in Thousands				Growth Rate, Annualized		
	Sept. 2020	June 2021	Aug. 2021	Sept. 2021	12 Month	3 Month	1 Month
Virginia							
Health Care & Social Assistance	436.4	445.3	442.7	447.1	2.5%	1.6%	12.6%
<i>Ambulatory Health Care Services</i>	187.4	190.5	191.2	194.9	4.0%	9.6%	25.9%
<i>Hospitals</i>	104.6	105.5	105.2	105.3	0.7%	-0.8%	1.1%
<i>Nursing & Residential Care Facilities</i>	71.5	70.6	69.8	68.9	-3.6%	-9.3%	-14.4%
<i>Social Assistance</i>	72.9	78.7	76.5	78.0	7.0%	-3.5%	26.2%
Hampton Roads							
Health Care & Social Assistance	91.3	90.3	88.3	88.7	-2.8%	-6.9%	5.6%
<i>Hospitals</i>	21.4	21.4	21.4	21.4	0.0%	0.0%	0.0%
Northern Virginia							
Health Care & Social Assistance	131.6	135.0	136.7	139.6	6.1%	14.3%	28.6%
<i>Ambulatory Health Care Services</i>	66.5	67.1	68.5	71.2	7.1%	26.8%	59.0%
<i>Hospitals</i>	25.9	26.3	26.3	26.4	1.9%	1.5%	4.7%

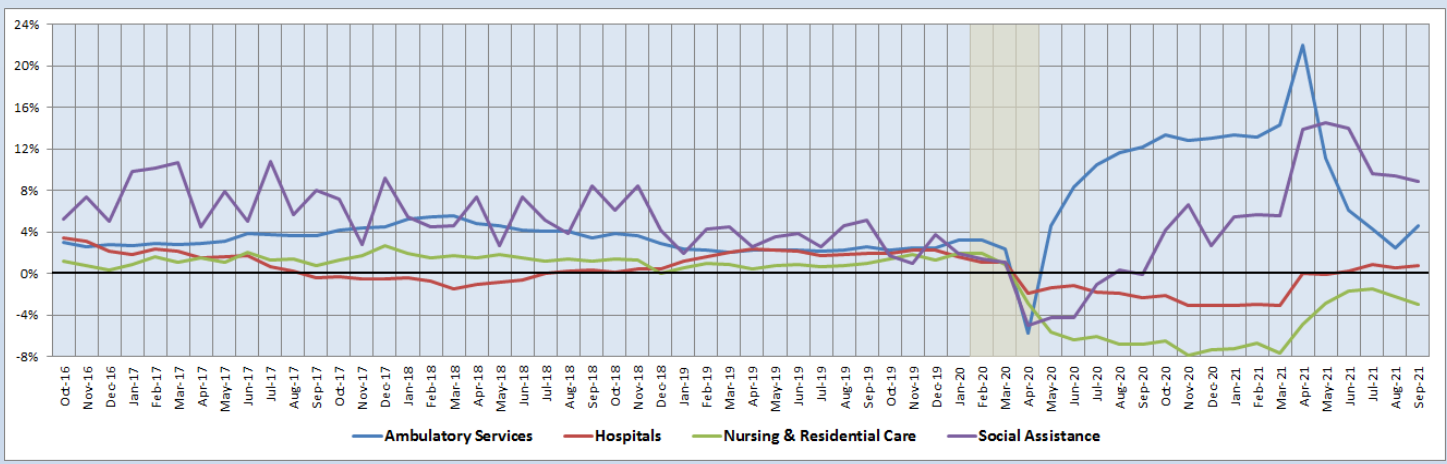
Preliminary estimates are italicized

Both Social Assistance and Ambulatory Health Care Services enjoyed very fast employment growth in September. Employment in Social Assistance grew at a 26.2% annualized rate in September, while Ambulatory Health Care Services saw employment grow at a 25.9% annualized rate during the month. Both of these HC&SA subsectors are also enjoying strong long-term employment growth as well. Over the past year, Social Assistance has increased employment by 7.0%. During the same time period, Ambulatory Health Care Services has seen employment increase at a 4.0% rate. As for Hospitals, this HC&SA subsector currently sports a 12-month employment growth rate of 0.7%.

12-Month Average Employment Growth by Subsector

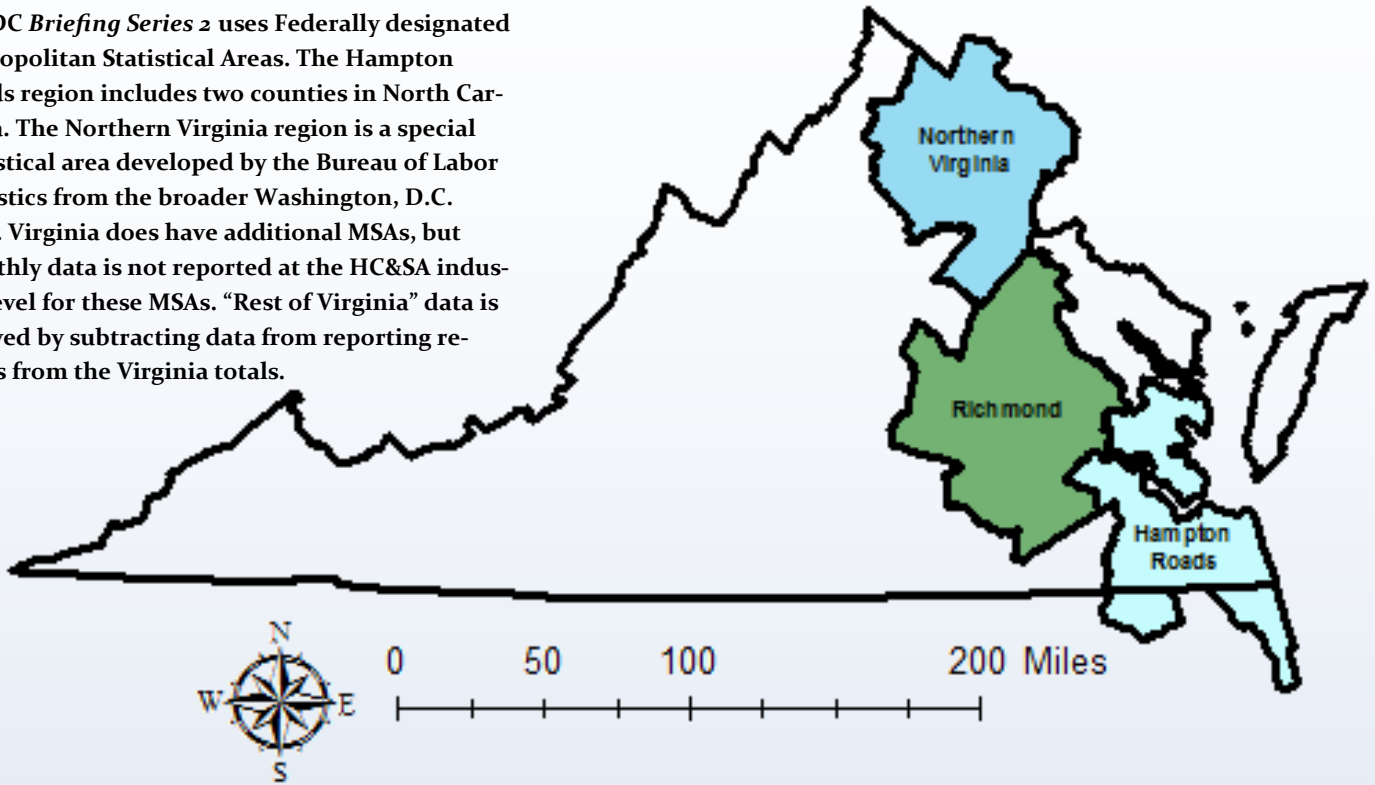
Even with this month’s strong job gain, Social Assistance saw its 12-month employment growth rate moving average dip slightly from 9.42% to 8.88% in September. Despite this decline, Social Assistance still enjoys the highest 12-month employment growth rate moving average among Virginia’s four HC&SA subsectors. Ambulatory Health Care Services have the next highest 12-month employment growth rate moving average, which nearly doubled from 2.48% to 4.58% during the month. Hospitals enjoyed a more modest increase to its own 12-month employment growth rate moving average from 0.57% to 0.76%, but Nursing & Residential Care Facilities saw its comparable moving average fall from -2.18% to -2.97%.

Figure 5: 12-Month Moving Average, HC&SA Subsector Employment Growth Rate (Not Seasonally Adjusted).



Region Map

HWDC *Briefing Series 2* uses Federally designated Metropolitan Statistical Areas. The Hampton Roads region includes two counties in North Carolina. The Northern Virginia region is a special statistical area developed by the Bureau of Labor Statistics from the broader Washington, D.C. MSA. Virginia does have additional MSAs, but monthly data is not reported at the HC&SA industry level for these MSAs. “Rest of Virginia” data is derived by subtracting data from reporting regions from the Virginia totals.



Region Detail

Northern Virginia		Richmond		Hampton Roads	
<i>Northern VA, (Non-standard CES Area 94783)</i>		<i>Richmond, VA (MSA 40060)</i>		<i>Virginia Beach-Norfolk-Newport News, VA-NC (MSA 47260)</i>	
Counties:	Cities:	Counties:	Cities:	Counties:	Cities:
Arlington	Alexandria	Amelia	Colonial Heights	Gloucester	Chesapeake
Clarke	Fairfax	Caroline	Hopewell	Isle of Wight	Hampton
Culpeper	Falls Church	Charles City	Petersburg	James City	Newport News
Fairfax	Fredericksburg	Chesterfield	Richmond	Mathews	Norfolk
Fauquier	Manassas	Dinwiddie		Surry	Poquoson
Loudoun	Manassas Park	Goochland		York	Portsmouth
Prince William		Hanover			Suffolk
Rappahannock		Henrico		<i>Currituck, NC</i>	Virginia Beach
Spotsylvania		King William		<i>Gates, NC</i>	Williamsburg
Stafford		New Kent			
Warren		Powhatan			
		Prince George			
		Sussex			

Healthcare Workforce
Data Center

Perimeter Center
9960 Mayland Drive, Suite 300
Henrico, VA 23233-1463

Phone: (804) 597-4213
Fax: (804) 527-4434
E-mail: hwdc@dhp.virginia.gov
Website: www.dhp.virginia.gov/PublicResources/HealthcareWorkforceDataCenter

HWDC Staff:

Elizabeth Carter, PhD <i>Executive Director</i>	Yetty Shobo, PhD <i>Deputy Director</i>
Rajana Siva, MBA <i>Data Analyst</i>	Christopher Coyle <i>Research Assistant</i>

The Department of Health Professions Healthcare Workforce Data Center works to improve the data collection and measurement of Virginia's healthcare workforce through regular assessment of workforce supply and demand issues among the 80 professions and 350,000 practitioners licensed in Virginia by DHP.

The HWDC collects data on Virginia's licensed health professionals through surveys completed during the online license renewal and application process. Survey results and data may be accessed on our website: www.dhp.virginia.gov/PublicResources/HealthcareWorkforceDataCenter/.

The HWDC also provides a series of Virginia Healthcare Workforce Briefs based data collected by the U.S. Department of Labor's Bureau of Labor Statistics and the U.S. Department of Commerce' Bureau of Economic Analysis.

Virginia Healthcare Workforce Briefs:

Series 1: State & National Employment (Monthly)

Series 2: Virginia Regional Employment (Monthly)

Series 3: Income & Compensation (Quarterly)

Follow us on. . .

Tumblr: <http://vahwdc.tumblr.com/>

About the Data

Data in this report are from the U.S. Department of Labor Bureau of Labor Statistics' Current Employment Statistics program. The CES program surveys about 143,000 businesses and government agencies monthly. Unless otherwise noted, this series uses data that are not seasonally adjusted. Seasonal variations related to weather, holidays, weekends, seasons and other predictable variations are apparent in the data. Short-term changes may be related to seasonal changes rather than underlying trends. Data from recent months is preliminary and subject to revision in future releases from the CES. Revisions will be reported in future editions of this series. Unless otherwise noted, the CES data presented in this series:

Includes:

- ◆ Data on employed individuals drawing a paycheck (payroll employees).
- ◆ All employees, regardless of role, occupation or hours worked.
- ◆ HC&SA employees in the private sector only.
- ◆ Persons employed by health professionals in private practice.
- ◆ Both government and private sector workers in nonfarm employment data.

Does not include:

- ◆ Self-employed workers or volunteers, including health professionals in private practice.
- ◆ HC&SA employees in the public sector. (These are counted as government workers in monthly reports).
- ◆ Information on hours worked or the quality of employment.
- ◆ Government workers in HC&SA level data. (Government workers, regardless of occupation and role, are classified as public sector employees).